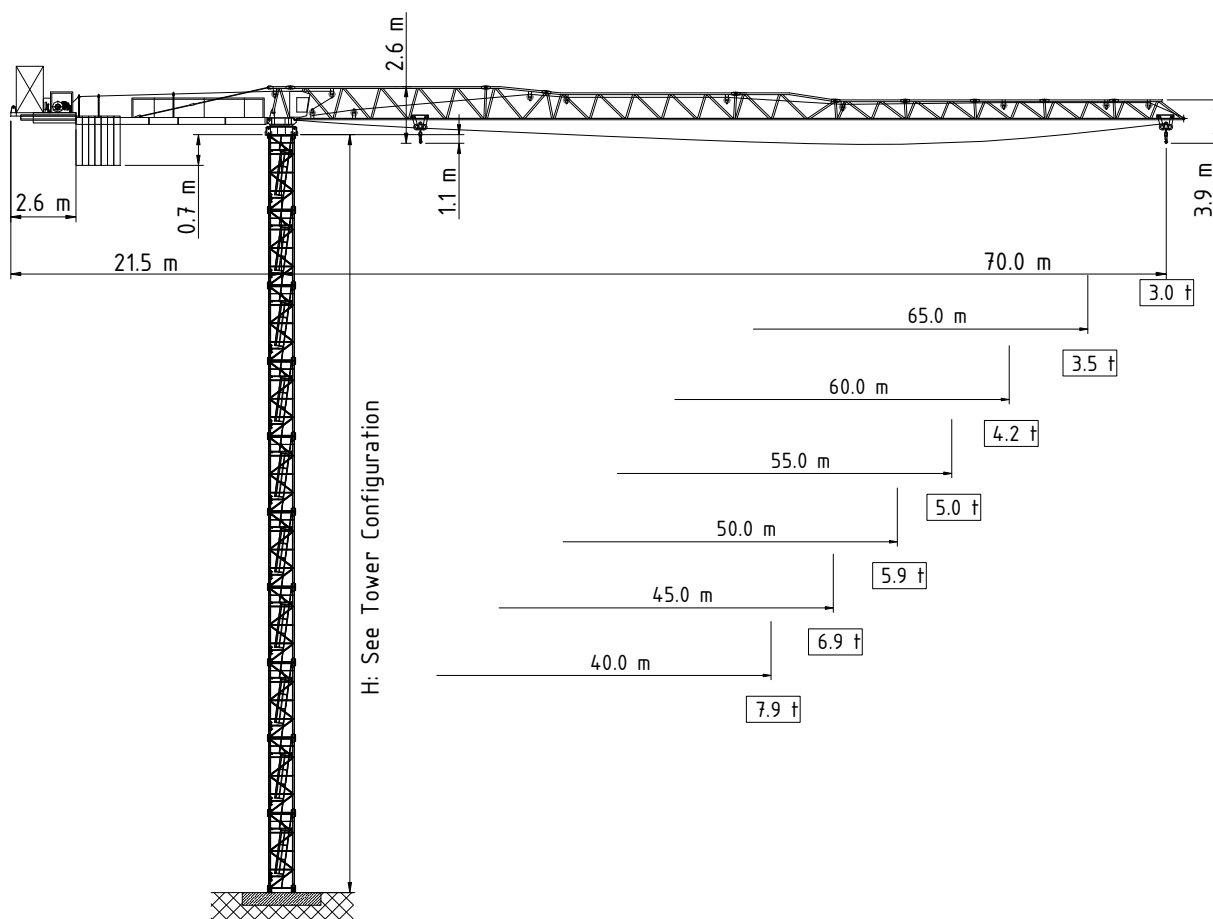


FLAT-TOP CRANE

Flat-Top-Kran / Grues Flat-Top
Подъемные краны без оголовка башни

BK 300-12

2/4 - Fall



Subject to modification without prior notice
Edition May. 2007



TÜV - Certificate

F.E.M. 1.001-1987
DIN 15018 H1 - B3

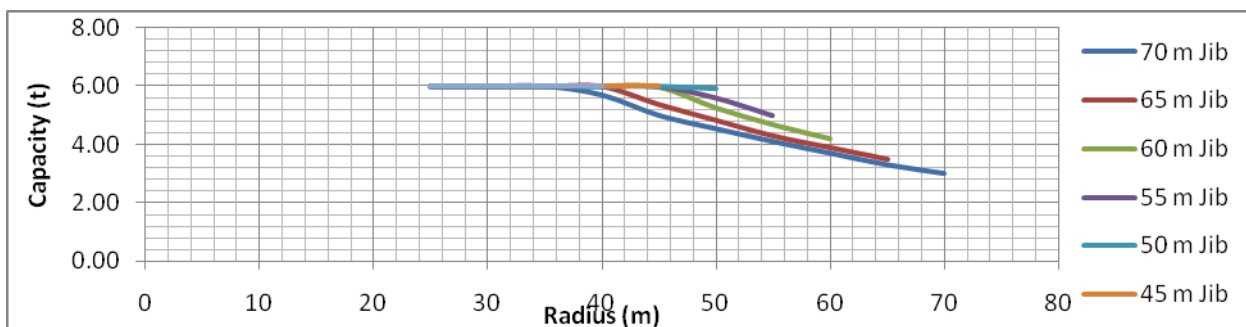
BK 300-12

2/4 - Fall

| Radius and Capacity

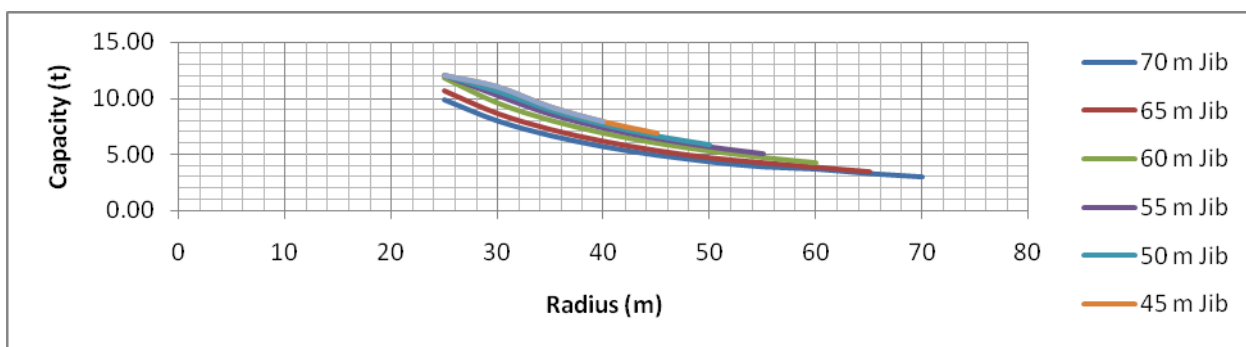
2-Fall

Jib	Max Capacity	25	30	35	40	45	50	55	60	65	70
70 m Jib	6.0 t (38.3 m)	6.00	6.00	6.00	5.70	5.00	4.54	4.10	3.70	3.30	3.00
65 m Jib	6.0 t (41.1 m)	6.00	6.00	6.00	6.00	5.38	4.84	4.30	3.90	3.50	
60 m Jib	6.0 t (44.8 m)	6.00	6.00	6.00	6.00	5.96	5.25	4.68	4.20		
55 m Jib	6.0 t (47.3 m)	6.00	6.00	6.00	6.00	6.00	5.61	5.00			
50 m Jib	6.0 t (49.3 m)	6.00	6.00	6.00	6.00	6.00	5.90				
45 m Jib	6.0 t (45.0 m)	6.00	6.00	6.00	6.00	6.00					
40 m Jib	6.0 t (40.0 m)	6.00	6.00	6.00	6.00						



4-Fall

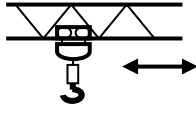
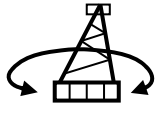
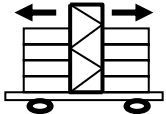
Jib	Max Capacity	25	30	35	40	45	50	55	60	65	70
70 m Jib	12.0 t (21.1 m)	9.88	8.00	6.68	5.70	4.94	4.34	3.90	3.70	3.30	3.00
65 m Jib	12.0 t (22.6 m)	10.7	8.68	7.26	6.20	5.38	4.74	4.30	3.90	3.50	
60 m Jib	12.0 t (24.6 m)	11.8	9.56	8.00	6.85	5.96	5.25	4.68	4.20		
55 m Jib	12.0 t (25.9 m)	12.0	10.2	8.52	7.30	6.36	5.61	5.00			
50 m Jib	12.0 t (27.0 m)	12.0	10.6	8.94	7.66	6.68	5.90				
45 m Jib	12.0 t (27.7 m)	12.0	11.0	9.22	7.91	6.90					
40 m Jib	12.0 t (27.7 m)	12.0	11.0	9.21	7.90						



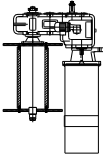
BK 300-12

2/4 - Fall

| Speed

Speed	480 V			
	60 Hz			
	Motor	6.0 kW	3 x 5.2 kW	2 x 9.0 kW
	Speed	6.0 - 120.0 m/min	0.8 rpm	30.0 m/min

| Power

Hoist Unit		44.4 (70.8 kW/88.4kVA)
		54.0 (80.4kW/100.0kVA)

| Counterweight

All Lengths	21.0 t
--------------------	--------

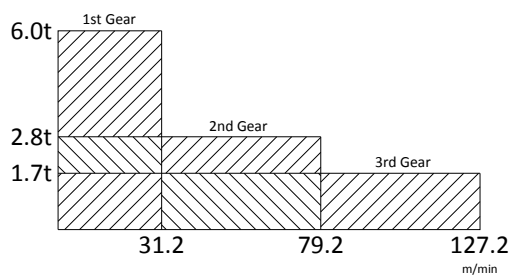
| Hoist Unit (54.0 S5.0 L560)

54.0 kW AC Slipring motor with 3-step gearbox (remote control) eddy current brake for precision hoisting with reduction of 1:10.

Equipment: double shoe brake with automatic adjustment and brake lining wear and tear control, control cabinet – contactor controlled, (PLC control by request) separate resistor cabinet, hoist limit switch grooved drum for hoist rope $\varnothing 14$ mm diameter, on erection frame ready for operation.

Speed with 480 V/60 Hz

2 - fall / max. Hook height 280.0 m



4 - fall / max. Hook height 140.0 m

