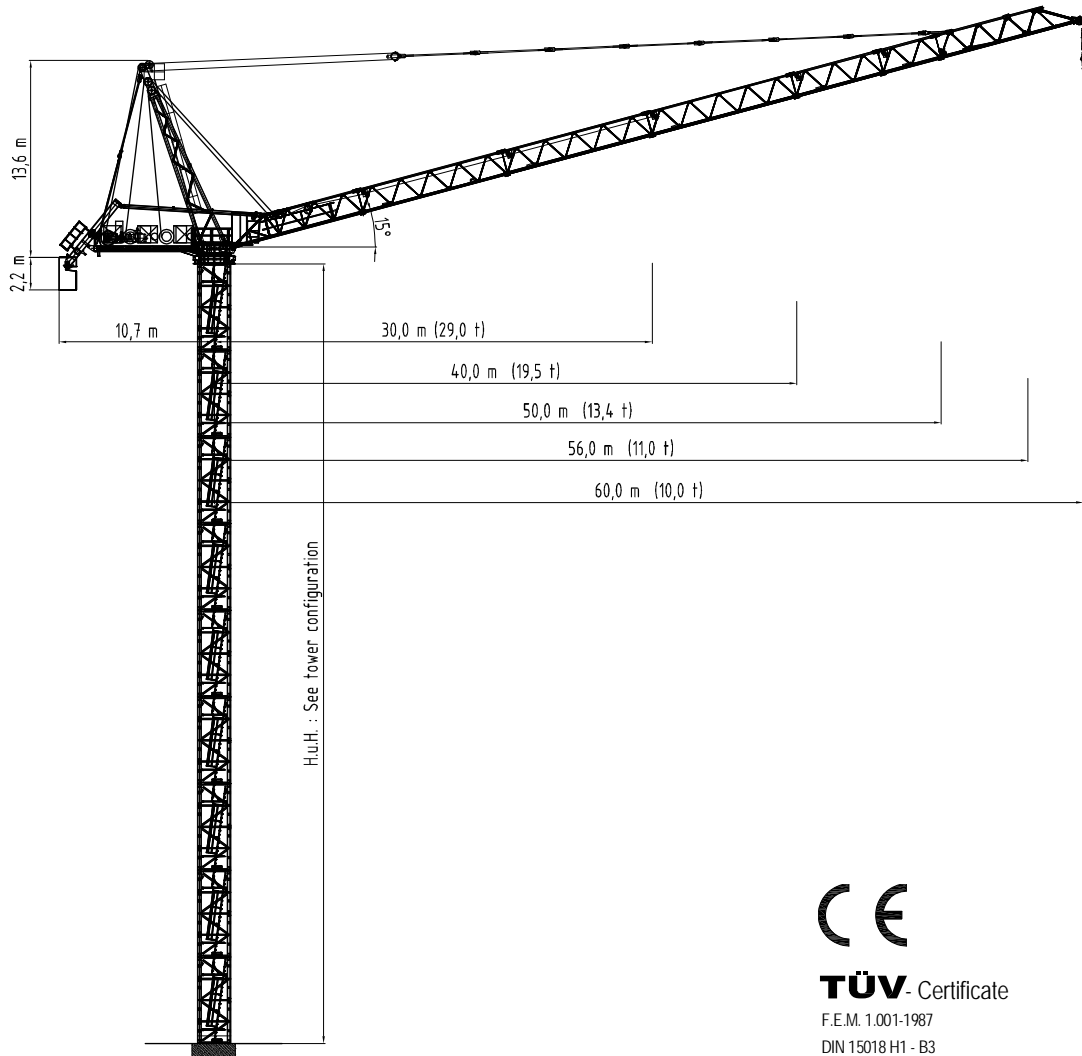


BN 660-34

1/2/4 - Fall



TÜV - Certificate

F.E.M. 1.001-1987

DIN 15018 H1 - B3

Subject to modification without prior notice
Edition Apr. 2007

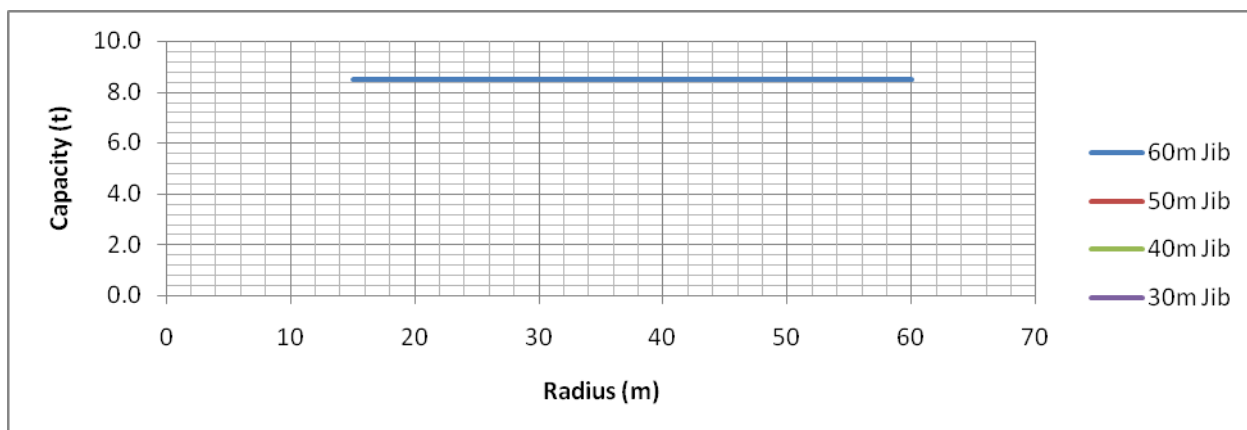
BN 660-34

1/2/4 - Fall

| Radius and Capacity

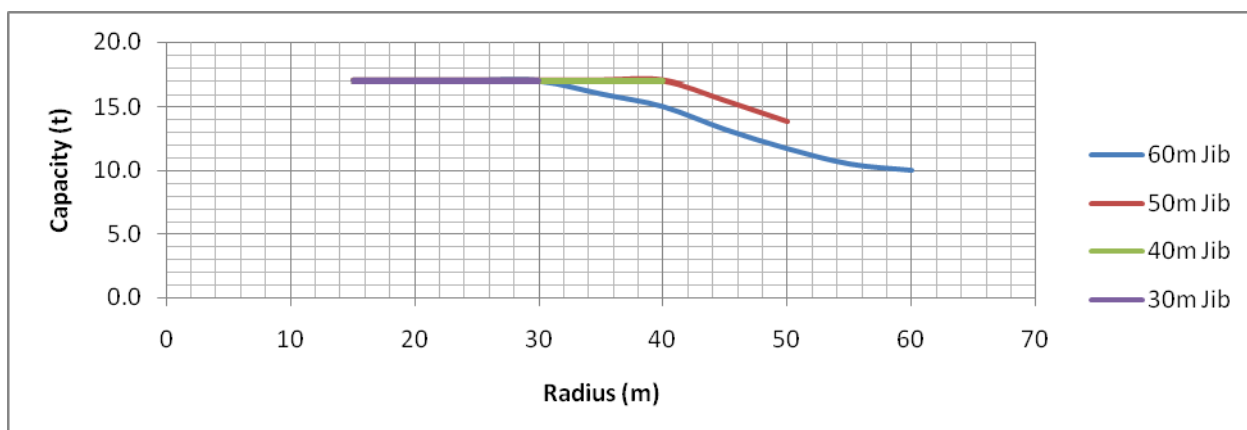
1-Fall

	Max	15	20	25	30	35	40	45	50	56	60
60m Jib	8.5 t (3.0-60.0 m)	8.5	8.5	8.5	8.5	8.5	8.5	8.5	8.5	8.5	8.5



2-Fall

	Max	15	20	25	30	35	40	45	50	56	60
60m Jib	17.0 t (6.0-32.0 m)	17.0	17.0	17.0	17.0	16.0	15.0	13.2	11.7	10.5	10.0
50m Jib	17.0 t (5.0-43.0 m)	17.0	17.0	17.0	17.0	17.0	17.0	15.5	13.4		
40m Jib	17.0 t (4.0-40.0 m)	17.0	17.0	17.0	17.0	17.0	17.0				
30m Jib	17.0 t (3.0-30.0 m)	17.0	17.0	17.0	17.0						

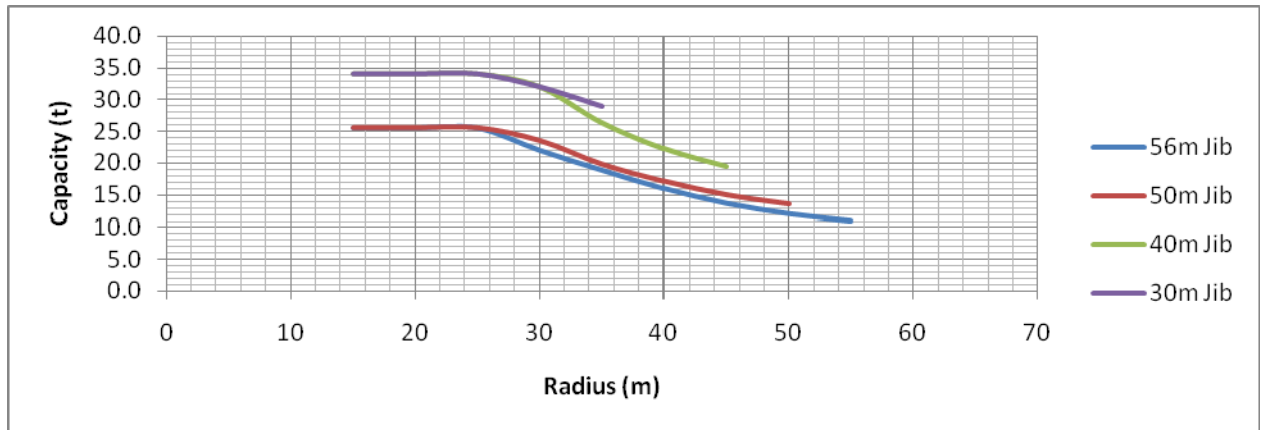


BN 660-34

1/2/4 - Fall

4-Fall

	Max	15	20	25	30	35	40	45	50	56	60
56m Jib	25.5 t (5.6-26.0 m)	25.5	25.5	25.5	22.0	18.9	16.0	13.7	12.1	11.0	
50m Jib	25.5 t (5.0-28.0 m)	25.5	25.5	25.5	23.5	19.8	17.1	15.0	13.6		
40m Jib	34.0 t (4.0-22.6 m)	34.0	34.4	32.0	26.4	22.3	19.5				
30m Jib	34.0 t (3.0-19.7 m)	34.0	34.0	32.0	29.0						



| Speed

Speed	480 V			
	60 Hz			
	Motor	90 kW	3 x 5.3 kW	2 x 79.0 kW
	Speed	2.8 m	0.8 rpm	20 - 180 m/min

| Hoist Drum

HH max.	x 2	6 Layer / 610.0 m
----------------	-----	-------------------

| Counterweight

All Lengths	66.0 t
--------------------	--------

LUFFING CRANE

Nadelauslegerkran / Grues à flèche relevable
Gru con braccio a volata variabile

BN 660-34

1/2/4 - Fall

Luffing Crane BN 660-34