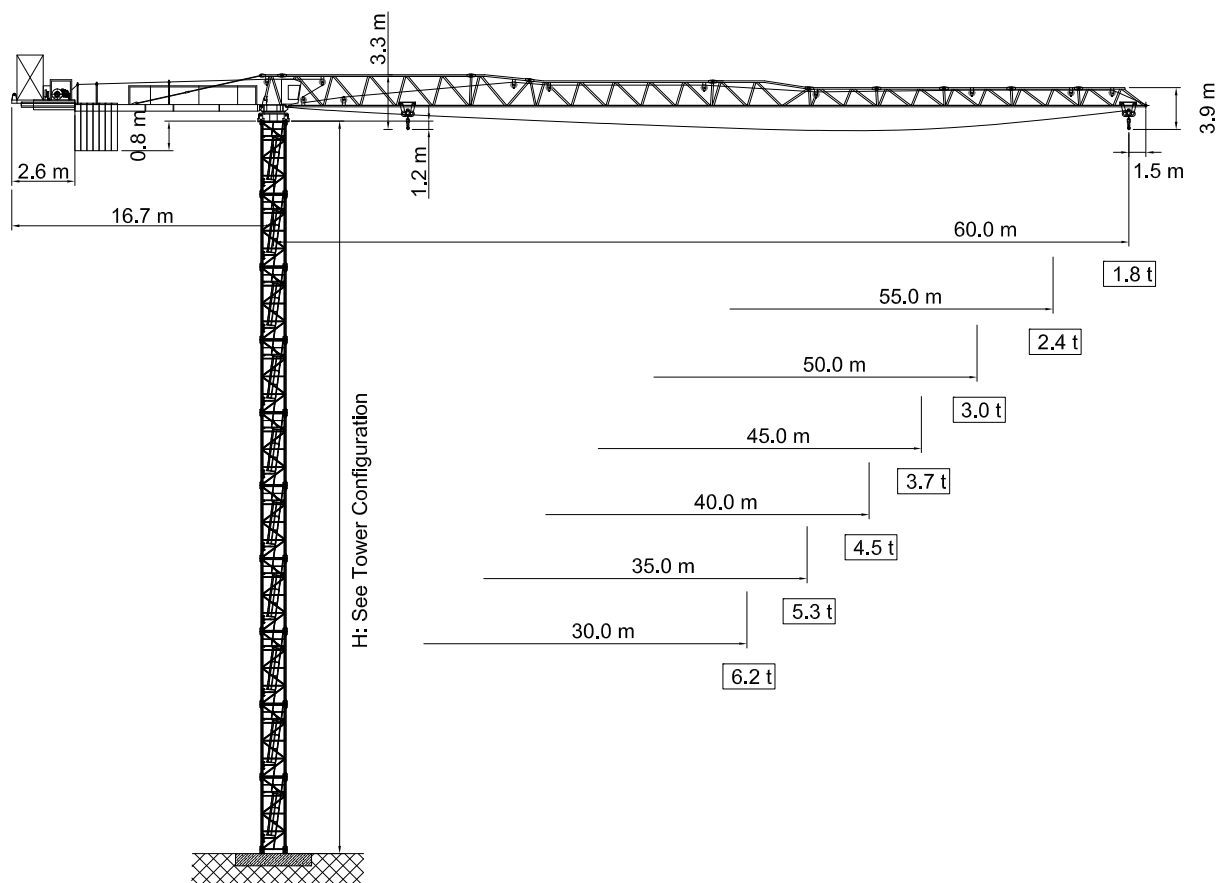


FLAT-TOP CRANE

Flat-Top-Kran / Grues Flat-Top
Подъемные краны без оголовка башни

BK 170-10

2 - Fall



Subject to modification without prior notice
Edition Jan. 2009



TÜV - Certificate

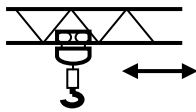
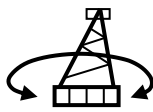
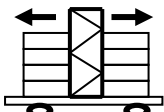
F.E.M. 1.001-1987
DIN 15018 H1 - B3

Tower Crane BK 170-10

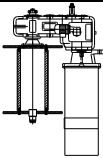
| Radius and Capacity

Jib		Max. Capacity	m × t										
m	t		m	16	18	20	25	30	35	40	45	50	55
60.0	10.0	17.2	10.0	7.59	6.73	5.22	4.23	3.53	3.00	2.60	2.28	2.02	1.80
55.0	10.0	19.6	10.0	10.0	7.82	6.08	4.94	4.13	3.53	3.07	2.70	2.40	
50.0	10.0	21.3	10.0	10.0	10.0	6.69	5.44	4.56	3.91	3.40	3.00		
45.0	10.0	22.8	10.0	10.0	10.0	7.23	5.89	4.95	4.24	3.70			
40.0	10.0	24.0	10.0	10.0	10.0	7.65	6.24	5.24	4.50				
35.0	10.0	24.3	10.0	10.0	10.0	7.73	6.31	5.30					
30.0	10.0	23.9	10.0	10.0	10.0	7.60	6.20						

| Speed

Speed	380 V			
	50 / 60 Hz			
	Motor	6.6 kW	2 x 5.2 kW	2 x 6.6 kW
	Speed	13.0 - 79.0 m/min	0.97 rpm	30.0 m/min

| Power

Hoist Unit		37.0 (61.4 kW / 76.6 kVA)
		44.4 (71.0 kW / 88.7 kVA)

| Counterweight

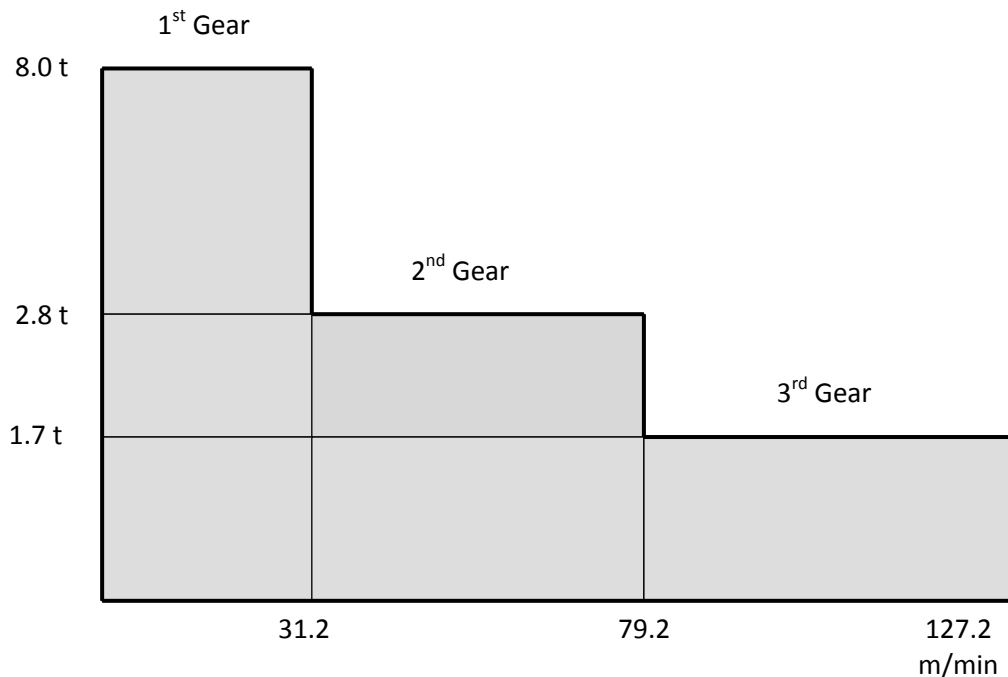
All Lengths	16.8 t
-------------	--------

| Hoist Unit (54.0 S5.0 L560)

Hoist Unit 44.4 S3.0 L440

44.4 kW AC Slipring motor with 3-step Gearbox (remote control) eddy current brake for precision hoisting with reduction of 1:10.

Equipment: double shoe brake with automatic adjustment and brake lining wear and tear control, control cabinet – contactor controlled, (PLC control by request) separate resistor cabinet, hoist limit switch grooved drum for hoist rope $\phi 14$ mm diameter, on erection frame ready for operation.



FLAT-TOP CRANE

Flat-Top-Kran / Grues Flat-Top
Подъемные краны без оголовка башни

BK 170-10

2 - Fall

Tower Crane BK 170-10