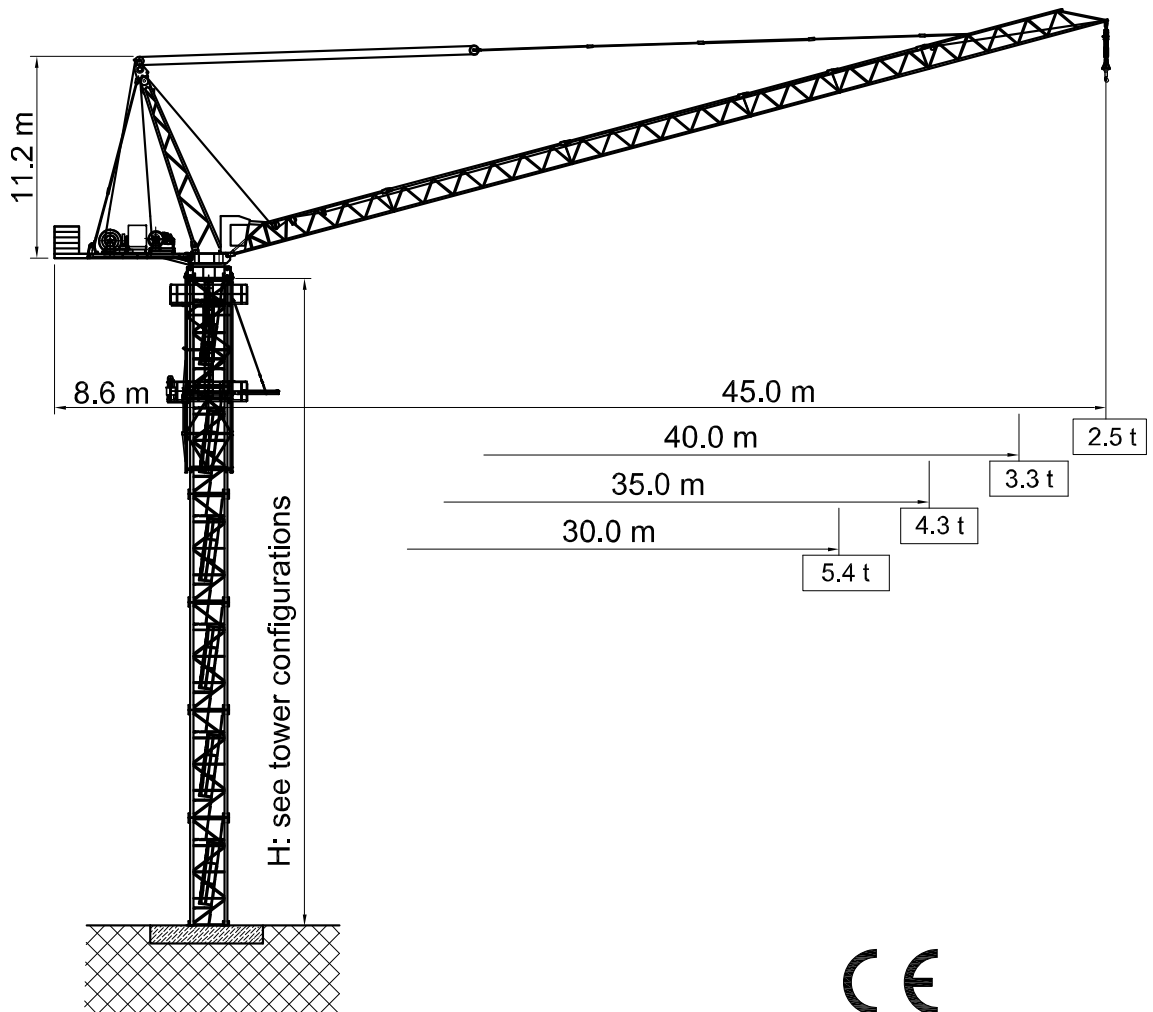


BN 130-12

2/4 - Fall



Subject to modification without prior notice
Edition Jan. 2009



TÜV - Certificate

F.E.M. 1.001-1987
DIN 15018 H1 - B3



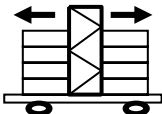
BN 130-12

2/4 - Fall


| Radius and Capacity

Jib		Max. Capacity		m × t									
m	Rope-Fall	t	m	12	14	16	18	20	25	30	35	40	45
45.0	2	6.0	20.0	6.00	6.00	6.00	6.00	6.00	4.74	3.90	3.30	2.85	2.50
40.0	4	12.0	11.7	11.7	9.99	8.70	7.70	6.90	5.46	4.50	3.81	3.30	
	2	6.0	22.9	6.00	6.00	6.00	6.00	6.00	5.46	4.50	3.81	3.30	
35.0	4	12.0	13.1	12.0	11.2	9.76	8.64	7.75	6.14	5.07	4.30		
	2	6.0	25.6	6.00	6.00	6.00	6.00	6.00	6.00	5.07	4.30		
30.0	4	12.0	13.9	12.0	11.9	10.4	9.20	6.54	6.54	5.40			
	2	6.0	27.1	6.00	6.00	6.00	6.00	6.00	6.00	5.40			

| Speed

Speed	480 V			
	60 Hz			
	Motor	28.8 kW	5.2 kW	2 x 6.6 kW
	Speed	T = 1.0 - 2.0 - 11.5 min	0.97 rpm	v = 30.0 m/min

| Hoist Unit

480 V / 60 Hz		44.0 (78.4 – 98.0 kW / kVA)
---------------	---	-----------------------------

| Counterweight

All Lengths	16.0 t
-------------	--------